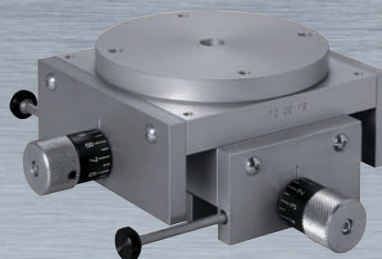
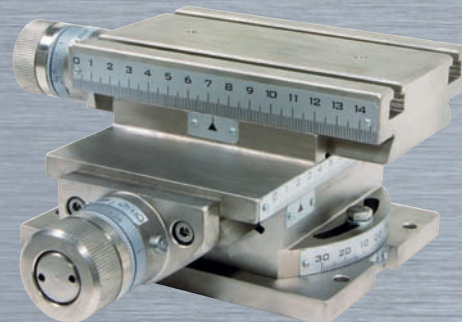
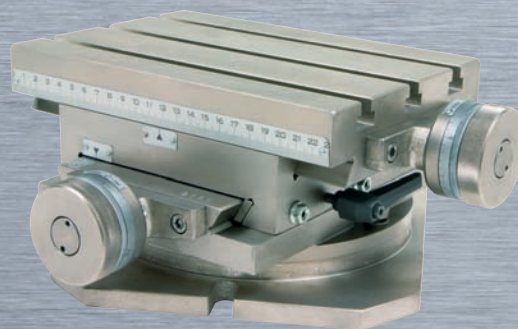
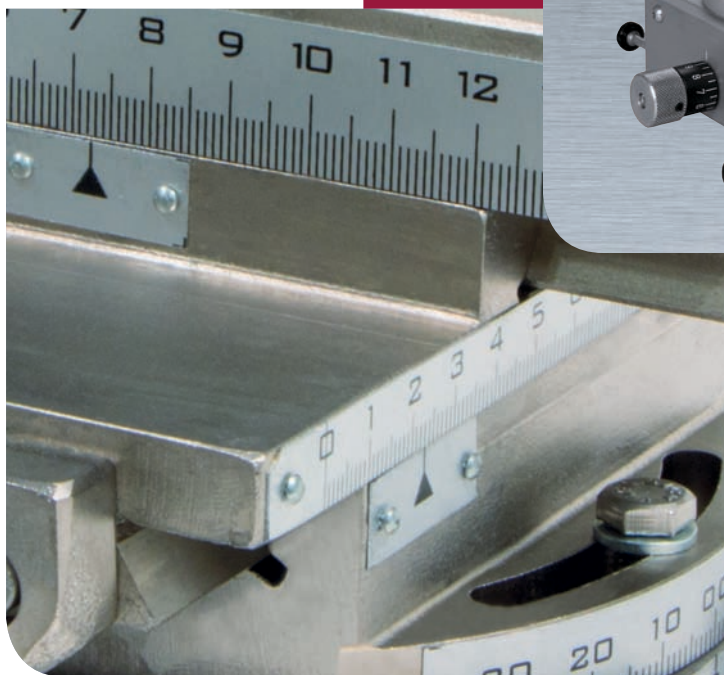
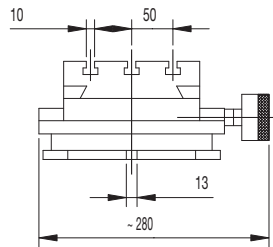
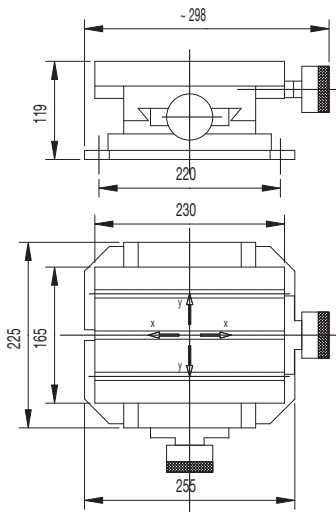


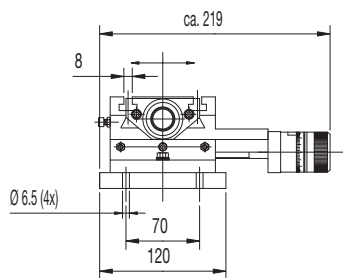
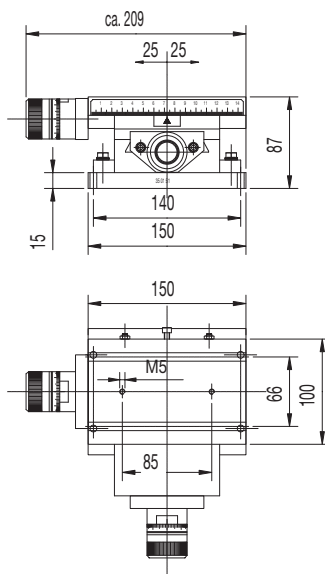
Coordinate tables



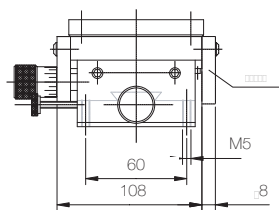
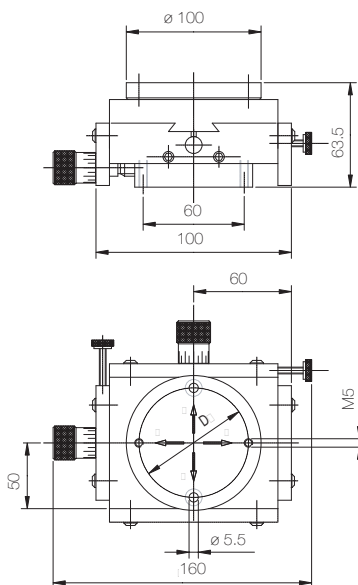
MG-0
KT 50
KT 30



The MG-0 coordinate table provides precise adjustment of the image onto a printed part and is produced from stable cast iron. The MG-0 is especially well-suited for the larger printing machines or for the assembly of heavy tooling fixtures. It allows for adjustments in the x- and y-axes through the use of fine adjustment knobs with a vernier. The w-axis adjustments are carried out using a marked scale.



The KT 50 coordinate table is produced from stable cast iron. Due to its solid and yet compact construction, the KT 50 is well-suited for applications requiring critical print image adjustments onto parts with smaller and middle-sized print machines. It is often used on shuttle tables as well. Infinitely variable adjustments can be made in the x- and y-axes using the fine adjustment knobs with a vernier. The w-axis adjustments are carried out using a marked scale.



The KT 30 coordinate table enables precise adjustment of an image onto the printed part. The adjustments for the x- and y-axes are carried out with the help of fine adjustment knobs. The KT 30 is manufactured out of aluminum and is especially well-suited for small printing machines or applications, which require peripheral devices, such as a shuttle table.

The DRV-30 turning device is an ideal complement to the KT 30 coordinate table. When mounted to the KT 30, the turning device provides a w-axis adjustment through an adjustment knob.

TECHNICAL DATA MG-0

ADJUSTMENT POSSIBILITIES

- x-axis: ± 60 mm
- y-axis: ± 55 mm
- w-axis: 360° swivelling

T-SLOT FOR SLOT NUT DIN508
size 10

WEIGHT
20 kg

PART NUMBER
coordinate table MG-0
35 01 67

TECHNICAL DATA KT 50

ADJUSTMENT POSSIBILITIES

- x-axis: ± 25 mm
- y-axis: ± 25 mm
- w-axis: 22° swivelling

T-SLOT FOR LOT NUT DIN508
size 8

WEIGHT
8.5 kg

PART NUMBER
coordinate table KT 50
35 01 51

TECHNICAL DATA KT 30

ADJUSTMENT POSSIBILITIES

- x-axis: ± 15 mm
- y-axis: ± 15 mm
- when supplemented with DRV-30
additionally:
w-axis: 360° swivelling

WEIGHT
1.7 kg

PART NUMBER
coordinate table KT 30
70 00 76
turning device with fine adjustment DRV-30
70 00 77
mounting plate GP 80
89 80 07

